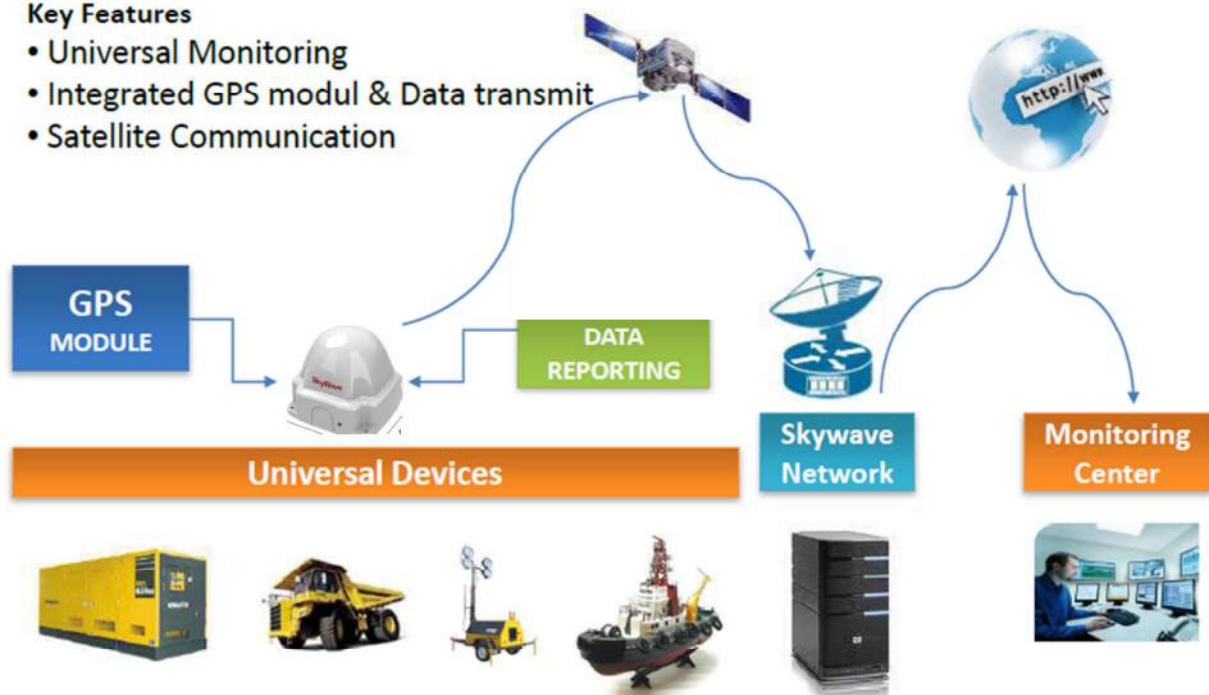


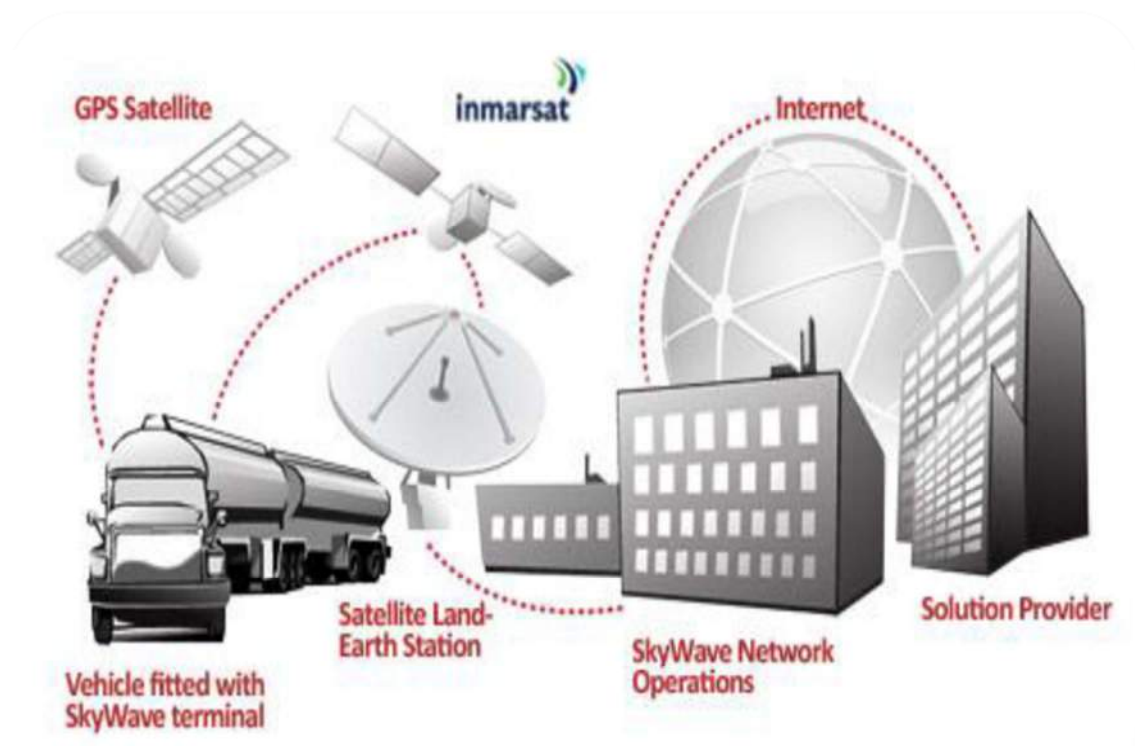
APPLICATION FEATURE

Key Features

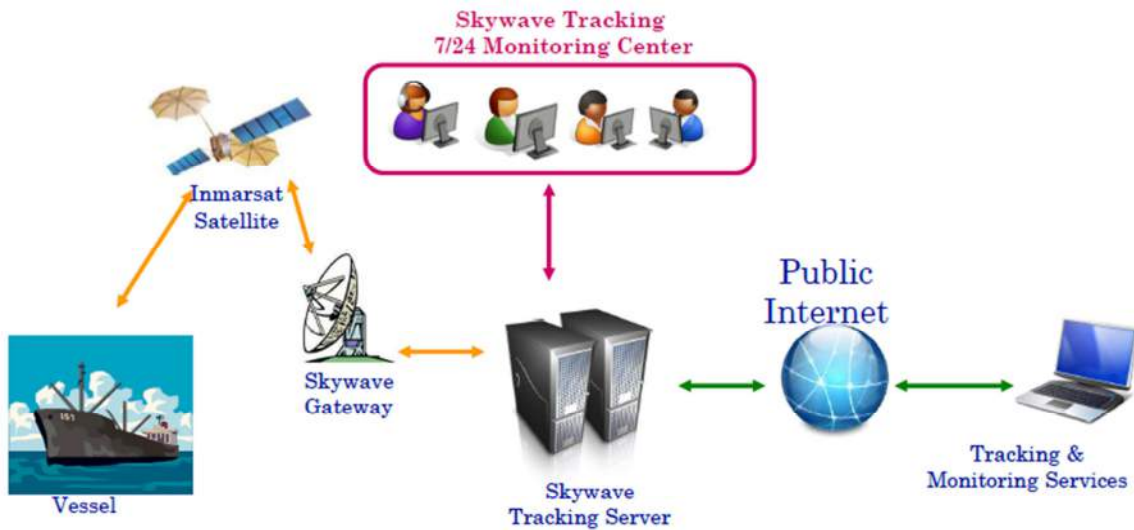
- Universal Monitoring
- Integrated GPS modul & Data transmit
- Satellite Communication



TRACKING SYSTEM



NETWORK SYSTEM



ELEMEN LAYANAN

- 1. Jaringan dan Sistem Komunikasi
 - Menggunakan jaringan Satelit Inmarsat
- 2. Perangkat Skywave | Tracking IDP 690
 - Perangkat terdiri dari :
 - ✓ Unit Outdoor :
Antenna GPS dan Antenna Komunikasi Satelit yang terintegrasi
 - ✓ Unit Tiang Outdoor Unit.
 - ✓ Kabel :
Kabel yang menghubungkan unit Outdoor dengan Power Supply
- 3. Aplikasi Vessel Tracking System
 - Web based, sehingga dapat diakses dengan mudah

IDP 600 Series

Satellite Communication Terminals



IDP-690 Maritime Terminal

The IDP 600 series terminals use the two-way Inmarsat IsatData Pro satellite service for remotely managing fixed and mobile assets anywhere in the world.

SATELLITE COMMUNICATION

| | |
|---------------------------|--|
| Satellite Service | Two-way, IsatData Pro |
| Coverage | Global |
| From-Mobile Message | 6,400 bytes |
| To-Mobile Message | 10,000 bytes |
| Typical Latency | <15 sec, 100 bytes |
| Elevation Angle (IDP-680) | +20° to +90° |
| Elevation Angle (IDP-690) | -15° to +90° |
| Frequency | Rx:1525.0 to 1559.0 MHz Tx:1626.5 to 1660.5 MHz |
| EIRP (IDP-680/IDP-690) | 7.0 dBW/5.0 dBW |

GPS

| | |
|------------------|---|
| Acquisition Time | Warm: 16 sec; Cold: 36 sec |
| Accuracy | 4 m (CEP) |
| Sensitivity | Acquisition: -136 dBm Tracking: -146 dBm |

EXTERNAL INTERFACES

| | |
|----------------|------------------------------|
| Inputs/Outputs | 4 - Analog or Digital In/Out |
| Serial | 1 - RS232, 1 - RS485 |

ELECTRICAL

| | |
|--|---|
| Input Voltage | 9 to 32V Load Dump Protection: +150V |
| Average Power Consumption (Typical@12VDC, 22 °C) | Receive: 8.3 mA Receive with GPS: 60 mA Transmit: 0.75 A Sleep: 100 µA |

PROGRAMMING

Lua scripting engine with core services. SDK with GUI development tools available.

| | |
|------------------|--------------|
| User Data Memory | 3.5 MB |
| Geofencing | 128 Polygons |

MASS

| | |
|-----------------|-------|
| IDP-680/IDP-690 | 460 g |
|-----------------|-------|

ENVIRONMENTAL

| | |
|-----------------------|---|
| Operating Temperature | -40 °C to +85 °C |
| Storage Temperature | -40 °C to +85 °C |
| Dust & Water Ingress | IP67 |
| Vibration | SAE J1455 (Sec 4.9.4.2 fig 6-8) MIL-STD-810G (Sec 514.6) |
| Shock | MIL-STD-810G (Sec 516.6) |
| Load Dump Protection | SAE J1455 (Sec 4.13) |

CERTIFICATION

| | |
|-----------|----------------------------|
| Satellite | Inmarsat Type Approved |
| Other | CE Mark, FCC, RoHS, Anatel |

ORDERING CODES

| | |
|--------------|---|
| SM201016-SXG | IDP-680, Side-mount |
| SM201016-BXG | IDP-680, Bottom-mount |
| SM201009-SXG | IDP-690, Side-mount |
| SM201009-BXG | IDP-690, Bottom-mount |
| KT931002-001 | Development kit with free airtime, training and support. Order terminal separately. |

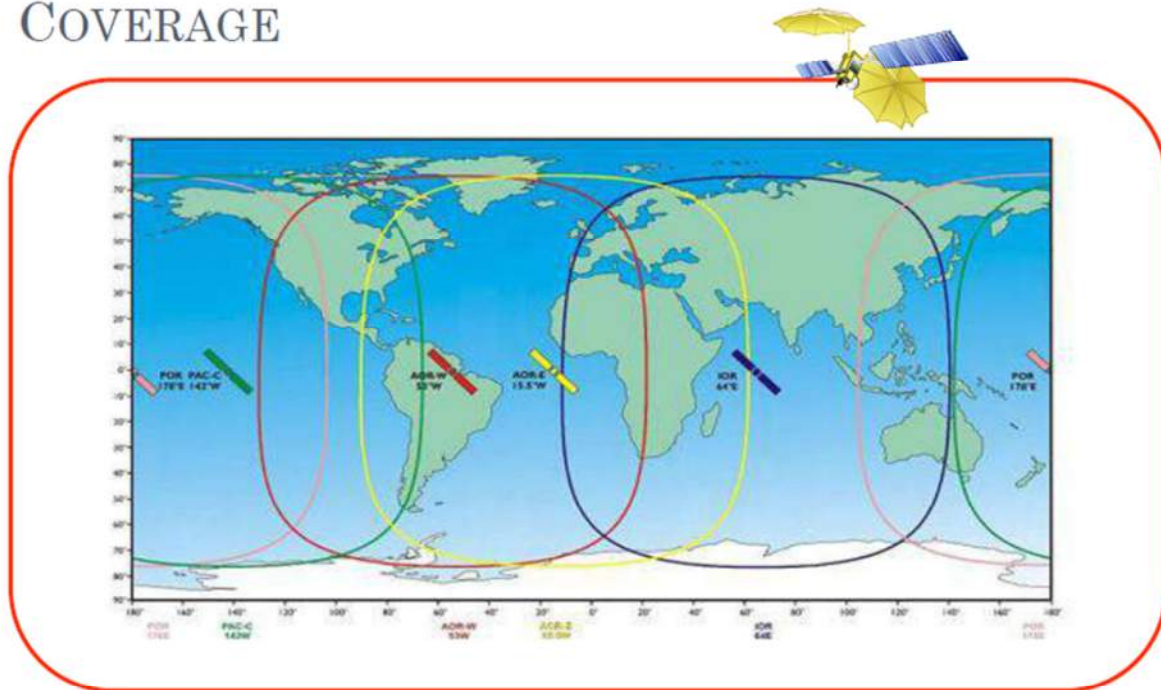
IsatData Pro is a trade mark of Inmarsat and is a service delivered by SkyWave Mobile Communications through the Inmarsat network.

HOW TO BUY

SkyWave mobile devices and satellite airtime services are available through a network of Solution Providers who offer turnkey solutions and industry expertise.



COVERAGE



Menggunakan Satelit Inmarsat :

- Geo Stasioner
- Mencakup seluruh Dunia



- Pengiriman data secara real time
- Cakupan tidak ada blank spot

APPLICATION FEATURE

- Info Update (date & time)
- Position (Latitude & Longitude)
- Kecepatan/Speed (Knot)
- Haluan/Heading (0 – 360)
- Distance/Jarak tempuh (nm "Nautical Mile")

| Date | Time | Position | Heading | Speed | Distance |
|------------|----------|----------------------|---------|-------|----------|
| 01/01/2012 | 12:00:00 | 117.184444 -0.552222 | 263 | 0.000 | 0.000 |
| 01/01/2012 | 12:01:00 | 117.184444 -0.552222 | 263 | 0.000 | 0.000 |
| 01/01/2012 | 12:02:00 | 117.184444 -0.552222 | 263 | 0.000 | 0.000 |
| 01/01/2012 | 12:03:00 | 117.184444 -0.552222 | 263 | 0.000 | 0.000 |
| 01/01/2012 | 12:04:00 | 117.184444 -0.552222 | 263 | 0.000 | 0.000 |
| 01/01/2012 | 12:05:00 | 117.184444 -0.552222 | 263 | 0.000 | 0.000 |
| 01/01/2012 | 12:06:00 | 117.184444 -0.552222 | 263 | 0.000 | 0.000 |
| 01/01/2012 | 12:07:00 | 117.184444 -0.552222 | 263 | 0.000 | 0.000 |
| 01/01/2012 | 12:08:00 | 117.184444 -0.552222 | 263 | 0.000 | 0.000 |
| 01/01/2012 | 12:09:00 | 117.184444 -0.552222 | 263 | 0.000 | 0.000 |
| 01/01/2012 | 12:10:00 | 117.184444 -0.552222 | 263 | 0.000 | 0.000 |
| 01/01/2012 | 12:11:00 | 117.184444 -0.552222 | 263 | 0.000 | 0.000 |
| 01/01/2012 | 12:12:00 | 117.184444 -0.552222 | 263 | 0.000 | 0.000 |
| 01/01/2012 | 12:13:00 | 117.184444 -0.552222 | 263 | 0.000 | 0.000 |
| 01/01/2012 | 12:14:00 | 117.184444 -0.552222 | 263 | 0.000 | 0.000 |
| 01/01/2012 | 12:15:00 | 117.184444 -0.552222 | 263 | 0.000 | 0.000 |
| 01/01/2012 | 12:16:00 | 117.184444 -0.552222 | 263 | 0.000 | 0.000 |
| 01/01/2012 | 12:17:00 | 117.184444 -0.552222 | 263 | 0.000 | 0.000 |
| 01/01/2012 | 12:18:00 | 117.184444 -0.552222 | 263 | 0.000 | 0.000 |
| 01/01/2012 | 12:19:00 | 117.184444 -0.552222 | 263 | 0.000 | 0.000 |
| 01/01/2012 | 12:20:00 | 117.184444 -0.552222 | 263 | 0.000 | 0.000 |
| 01/01/2012 | 12:21:00 | 117.184444 -0.552222 | 263 | 0.000 | 0.000 |
| 01/01/2012 | 12:22:00 | 117.184444 -0.552222 | 263 | 0.000 | 0.000 |
| 01/01/2012 | 12:23:00 | 117.184444 -0.552222 | 263 | 0.000 | 0.000 |
| 01/01/2012 | 12:24:00 | 117.184444 -0.552222 | 263 | 0.000 | 0.000 |
| 01/01/2012 | 12:25:00 | 117.184444 -0.552222 | 263 | 0.000 | 0.000 |
| 01/01/2012 | 12:26:00 | 117.184444 -0.552222 | 263 | 0.000 | 0.000 |
| 01/01/2012 | 12:27:00 | 117.184444 -0.552222 | 263 | 0.000 | 0.000 |
| 01/01/2012 | 12:28:00 | 117.184444 -0.552222 | 263 | 0.000 | 0.000 |
| 01/01/2012 | 12:29:00 | 117.184444 -0.552222 | 263 | 0.000 | 0.000 |
| 01/01/2012 | 12:30:00 | 117.184444 -0.552222 | 263 | 0.000 | 0.000 |
| 01/01/2012 | 12:31:00 | 117.184444 -0.552222 | 263 | 0.000 | 0.000 |
| 01/01/2012 | 12:32:00 | 117.184444 -0.552222 | 263 | 0.000 | 0.000 |
| 01/01/2012 | 12:33:00 | 117.184444 -0.552222 | 263 | 0.000 | 0.000 |
| 01/01/2012 | 12:34:00 | 117.184444 -0.552222 | 263 | 0.000 | 0.000 |
| 01/01/2012 | 12:35:00 | 117.184444 -0.552222 | 263 | 0.000 | 0.000 |
| 01/01/2012 | 12:36:00 | 117.184444 -0.552222 | 263 | 0.000 | 0.000 |
| 01/01/2012 | 12:37:00 | 117.184444 -0.552222 | 263 | 0.000 | 0.000 |
| 01/01/2012 | 12:38:00 | 117.184444 -0.552222 | 263 | 0.000 | 0.000 |
| 01/01/2012 | 12:39:00 | 117.184444 -0.552222 | 263 | 0.000 | 0.000 |
| 01/01/2012 | 12:40:00 | 117.184444 -0.552222 | 263 | 0.000 | 0.000 |
| 01/01/2012 | 12:41:00 | 117.184444 -0.552222 | 263 | 0.000 | 0.000 |
| 01/01/2012 | 12:42:00 | 117.184444 -0.552222 | 263 | 0.000 | 0.000 |
| 01/01/2012 | 12:43:00 | 117.184444 -0.552222 | 263 | 0.000 | 0.000 |
| 01/01/2012 | 12:44:00 | 117.184444 -0.552222 | 263 | 0.000 | 0.000 |
| 01/01/2012 | 12:45:00 | 117.184444 -0.552222 | 263 | 0.000 | 0.000 |
| 01/01/2012 | 12:46:00 | 117.184444 -0.552222 | 263 | 0.000 | 0.000 |
| 01/01/2012 | 12:47:00 | 117.184444 -0.552222 | 263 | 0.000 | 0.000 |
| 01/01/2012 | 12:48:00 | 117.184444 -0.552222 | 263 | 0.000 | 0.000 |
| 01/01/2012 | 12:49:00 | 117.184444 -0.552222 | 263 | 0.000 | 0.000 |
| 01/01/2012 | 12:50:00 | 117.184444 -0.552222 | 263 | 0.000 | 0.000 |
| 01/01/2012 | 12:51:00 | 117.184444 -0.552222 | 263 | 0.000 | 0.000 |
| 01/01/2012 | 12:52:00 | 117.184444 -0.552222 | 263 | 0.000 | 0.000 |
| 01/01/2012 | 12:53:00 | 117.184444 -0.552222 | 263 | 0.000 | 0.000 |
| 01/01/2012 | 12:54:00 | 117.184444 -0.552222 | 263 | 0.000 | 0.000 |
| 01/01/2012 | 12:55:00 | 117.184444 -0.552222 | 263 | 0.000 | 0.000 |
| 01/01/2012 | 12:56:00 | 117.184444 -0.552222 | 263 | 0.000 | 0.000 |
| 01/01/2012 | 12:57:00 | 117.184444 -0.552222 | 263 | 0.000 | 0.000 |
| 01/01/2012 | 12:58:00 | 117.184444 -0.552222 | 263 | 0.000 | 0.000 |
| 01/01/2012 | 12:59:00 | 117.184444 -0.552222 | 263 | 0.000 | 0.000 |
| 01/01/2012 | 13:00:00 | 117.184444 -0.552222 | 263 | 0.000 | 0.000 |



Date & time



Position



Speed



Heading indicator

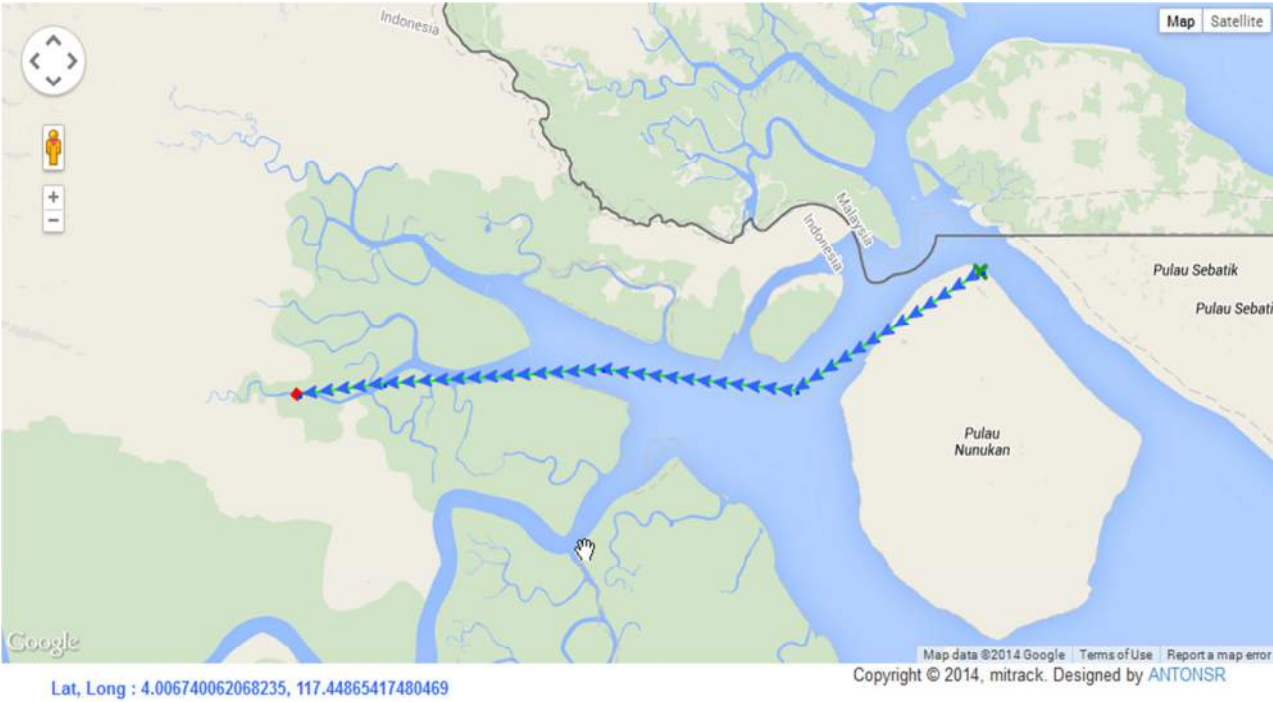


Distance "Nm"

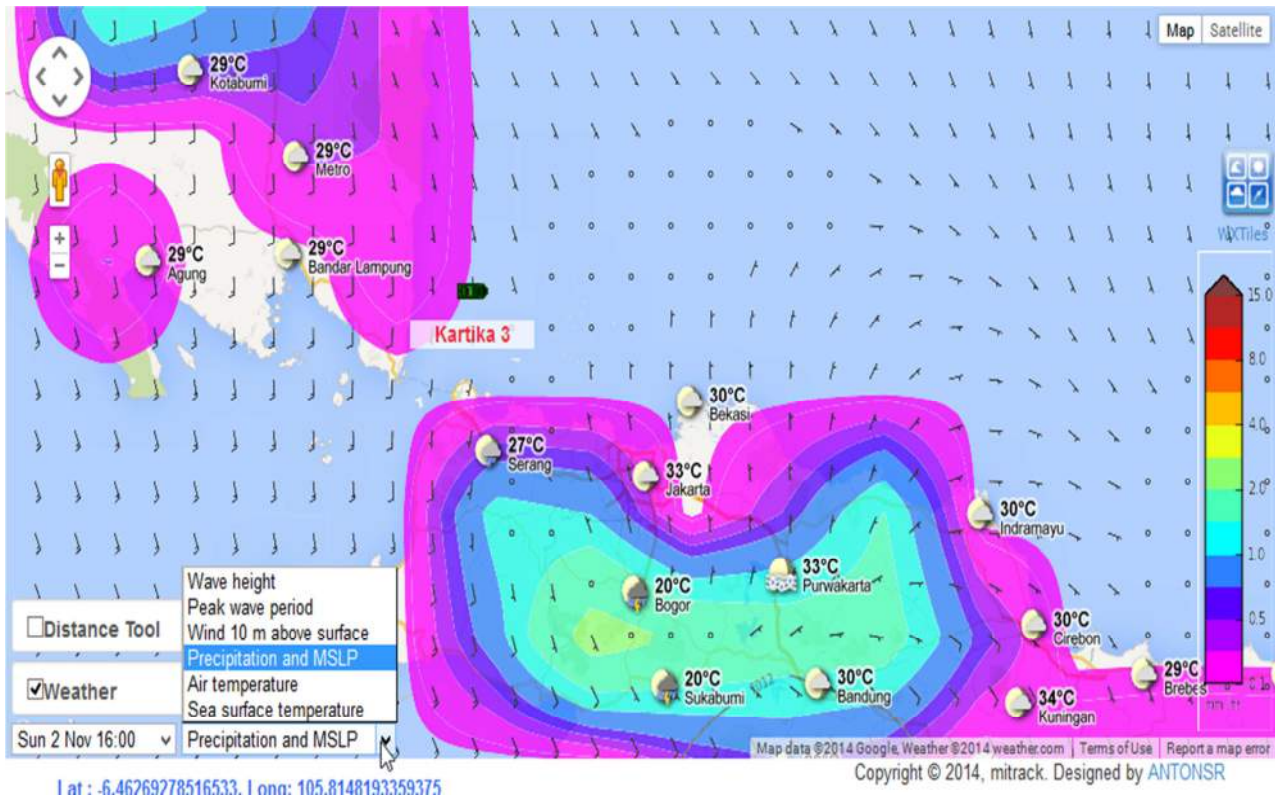
VESSEL LAST POSITION



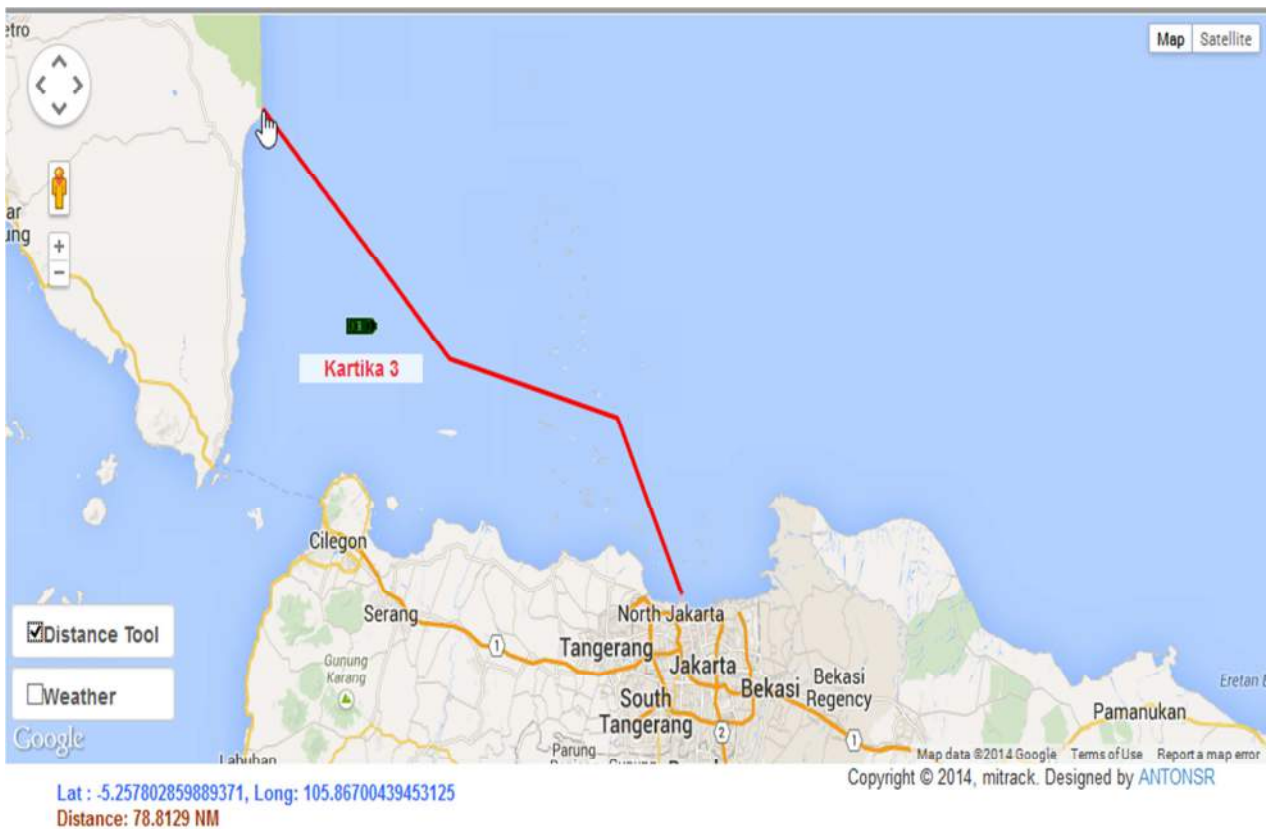
ROUTE VIEW / VESSEL HISTORY



WEATHER CONDITION



DISTANCE TOOL



REPORTING

Vessel Report

From Date : 2014-11-02 To Date : 2014-11-02

Terminal ID : 070000005871A4F

Vessel Name : Kartika 3

| No | Date | Latitude | Longitude | Speed (Knot) | Heading | Distance Moving (NM) |
|--------------------------------------|---------------------|----------|-----------|--------------|---------|----------------------|
| 1 | 2014-11-02 00:09:17 | -5.6006 | 105.7883 | 0 | 0 | 0 |
| 2 | 2014-11-02 01:09:17 | -5.6006 | 105.7883 | 1 | 0 | 0 |
| 3 | 2014-11-02 02:09:42 | -5.6006 | 105.7883 | 0 | 0 | 0 |
| 4 | 2014-11-02 03:09:21 | -5.6026 | 105.7957 | 1 | 149 | 0.46 |
| 5 | 2014-11-02 04:09:17 | -5.5933 | 105.7994 | 2 | 44 | 0.6 |
| 6 | 2014-11-02 05:09:17 | -5.5779 | 105.8122 | 1 | 51 | 1.2 |
| 7 | 2014-11-02 06:09:42 | -5.5724 | 105.8235 | 1 | 74 | 0.75 |
| 8 | 2014-11-02 07:09:17 | -5.5686 | 105.8364 | 2 | 96 | 0.81 |
| 9 | 2014-11-02 08:09:20 | -5.5864 | 105.8868 | 3 | 118 | 3.2 |
| 10 | 2014-11-02 09:09:36 | -5.6091 | 105.938 | 4 | 109 | 3.35 |
| 11 | 2014-11-02 10:09:42 | -5.6326 | 105.9883 | 3 | 117 | 3.32 |
| 12 | 2014-11-02 11:09:20 | -5.6543 | 106.0377 | 4 | 114 | 3.22 |
| 13 | 2014-11-02 12:09:16 | -5.6757 | 106.0846 | 4 | 103 | 3.08 |
| Subtotal Distance (NM) : | | | | | | 19.99 |
| Total Distance (in Nautical Miles) : | | | | | | 19.99 |

[DOWNLOAD XLS](#)[View and Download as PDF](#)